

**Health Reform:
An Update on Federal and
Washington-Specific Activity**

**EBPA Legislative Presentation
November 3, 2011**

Len Sorrin
Director, Congressional & Legislative Affairs

An Independent Licensee of the
Blue Cross Blue Shield Association Confidential & Proprietary - For Internal Use Only **PREMERA** | BLUE CROSS

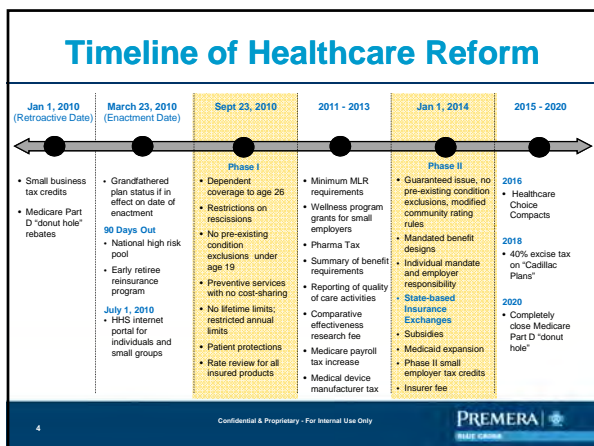
Agenda

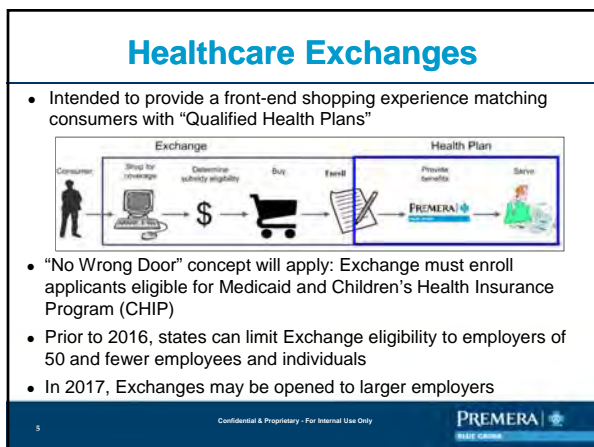
- Federal Healthcare Reform Activity
- Washington's Health Exchange
- Current Washington Political Scene
- Q&A

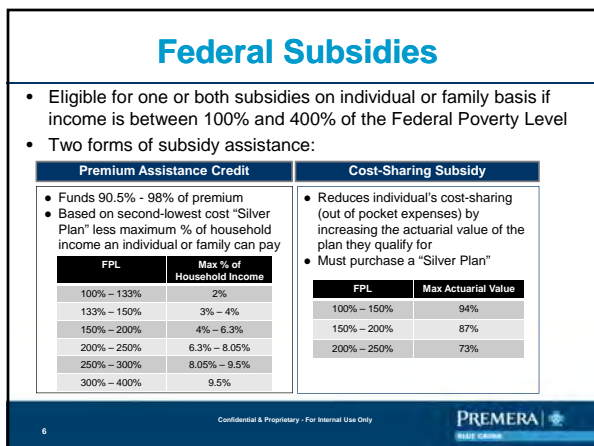
Confidential & Proprietary - For Internal Use Only **PREMERA** | BLUE CROSS

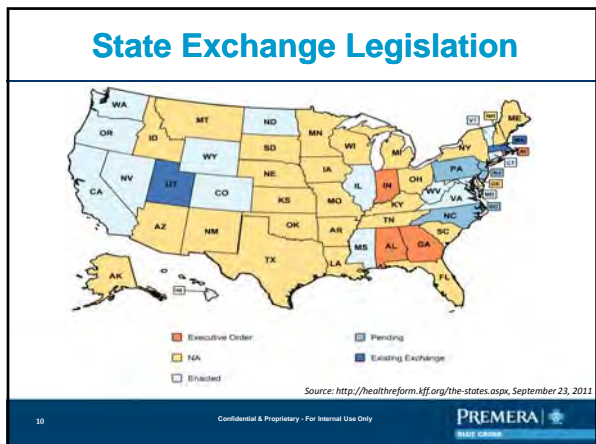
**Federal Healthcare
Reform Activity**

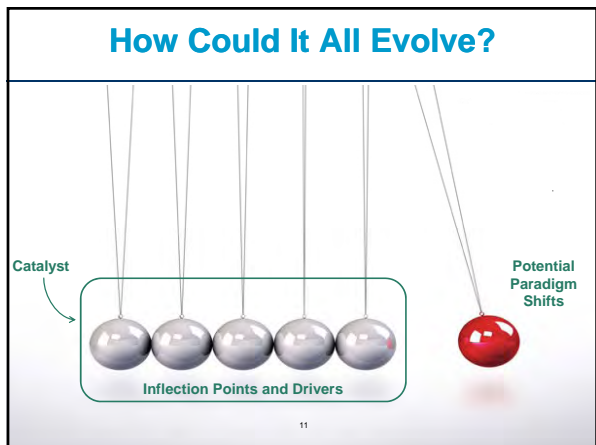
Confidential & Proprietary - For Internal Use Only **PREMERA** | BLUE CROSS

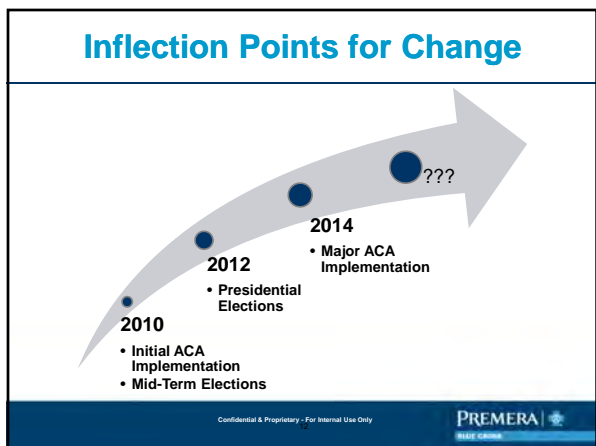












Potential Catalysts

Insurer or provider financial stress

Accountable Care Organizations

Employer market intrusion

2014 freeze-up of system

Massive federal and state deficits

Cost implications of ACA

Massive implementation challenges

Underlying cost of healthcare

State Innovation waivers

Court challenges to reform law

Confidential & Proprietary - For Internal Use Only

PREMERA
BLUE CROSS

Washington's Health Exchange

Confidential & Proprietary - For Internal Use Only

PREMERA
BLUE CROSS

Washington's Health Exchange

- A public-private partnership, separate from state
- 9-member Board appointed by Governor by Dec 15, 2011
 - 8 members appointed from lists submitted by legislative caucuses (4 Republican and 4 Democratic)
 - Chair is non-voting except in case of tie
 - HCA and OIC are ex-officio
- Report from Joint Select Legislative Committee, HCA and Exchange Board due Jan 1, 2012 (detail on next slide)

Confidential & Proprietary - For Internal Use Only

PREMERA
BLUE CROSS

Washington's Health Exchange

Current Activity:

- Board membership determination underway
- Governor must appoint Board from legislative nominee list by December 15
- State received 1 year, \$22.9 million grant to design/develop Exchange
- HCA is developing options and recommendations on policy decisions – report due by January 1
 - Also working on an operational plan for Exchange

16

Confidential & Proprietary - For Internal Use Only



Current Washington Political Scene

Confidential & Proprietary - For Internal Use Only



2012 Washington Political Scene

- Redistricting
- Gubernatorial Race
- Upcoming Legislative Session – Potential Issues:
 - Exchange Implementation
 - High Risk Pools
 - Benefit Mandates

18

Confidential & Proprietary - For Internal Use Only



